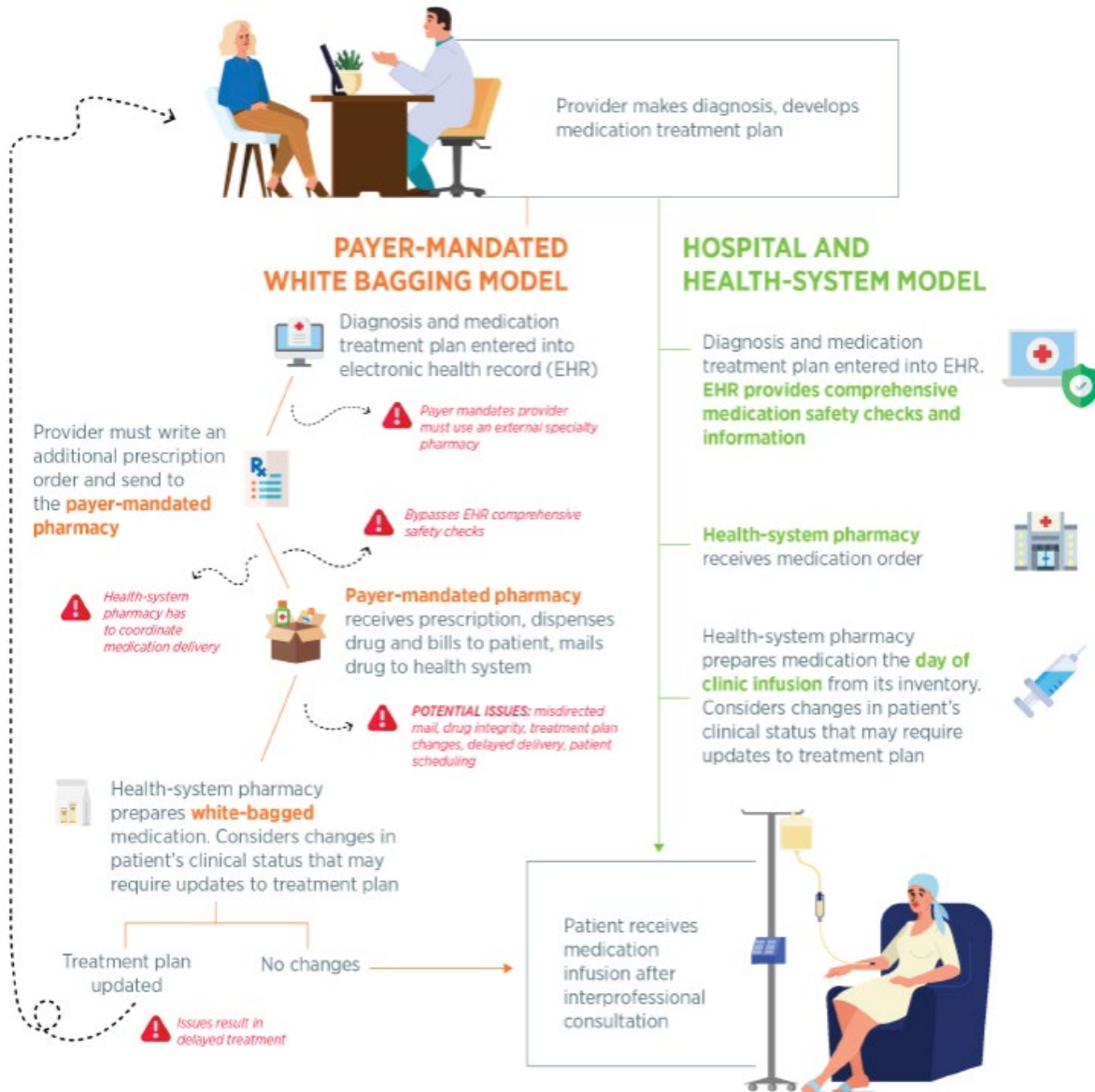


# SB 1255 / HB 2814 INS-CLINICIAN ADMINISTER DRUG

## How Does White-Bagging Work?



# SB 1255 (Cristina Castro) / HB 2814 (Camille Lilly)

## INS-CLINICIAN ADMINISTER DRUG

To ensure access to safe and effective drug therapies, a health benefit plan amended, delivered, issued, or renewed on or after January 1, 2024 that provides prescription drug coverage or its contracted pharmacy benefit manager shall not:

- (1) require an enrollee to obtain a covered clinician-administered drug from a pharmacy selected by the health benefit plan or pharmacy benefit manager with the intent to transport the drug to another site of service for administration;
- (2) require an enrollee to obtain a covered clinician-administered drug from a pharmacy selected by the health benefit plan or pharmacy benefit manager;
- (3) notwithstanding any other provision of law, steer or offer financial or other incentives to induce an enrollee to obtain a clinician-administered drug from a pharmacy identified by the health benefit plan or pharmacy benefit manager;
- (4) condition, deny, restrict, refuse to authorize, or otherwise limit benefits and coverage to an enrollee for medically necessary clinician-administered drugs and related services obtained from the provider that administers the drug or from a pharmacy that is not selected by the health benefit plan or pharmacy benefit manager;
- (5) condition, deny, restrict, refuse to authorize, or otherwise limit reimbursement to a provider for covered medically necessary clinician-administered drugs and related services obtained from the provider that administers the drug or from a pharmacy that is not selected by the health benefit plan or pharmacy benefit manager;
- (6) assess higher deductibles, copayments, coinsurance, or other cost-sharing amounts for clinician-administered drugs obtained from the provider that administers the drug or from a pharmacy that is not selected by the health benefit plan or pharmacy benefit manager;
- (7) require an enrollee to use a home infusion pharmacy to receive clinician-administered drugs in their home or to use a site of service identified by the health benefit plan or pharmacy benefit manager;
- (8) include the site of service in prior approval or medical necessity criteria for clinician-administered drugs.